

# Domain and Range Day 2

## Agenda

warm-up

HW check

Activity

HW - Finish

Activity

## Reminders

4:15-5:00PM Last

call for Test 2

Corrections

Turn in BR Passes

Quiz Friday

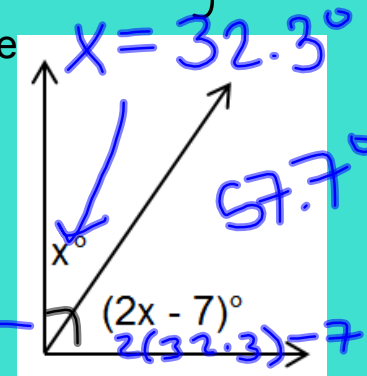
(have your HW out & ready to check)

## WARM-UP Wednesday

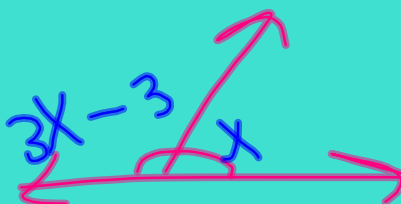
1. Using the diagram, find the measure of both angles

$$\underline{x + 2x - 7 = 90}$$

$$\begin{array}{r} 3x - 7 = 90 \\ +7 \quad +7 \\ \hline 3x = 97 \\ \frac{3x}{3} = \frac{97}{3} \end{array}$$



2. If the measure of an angle's supplement is 3 less than triple the angle, what is the measure of the smaller angle?

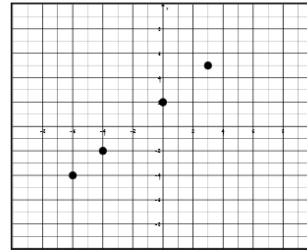


$$\begin{array}{r} 3x - 3 + x = 180 \\ 4x - 3 = 180 \end{array}$$

$$x = \underline{\hspace{2cm}}$$

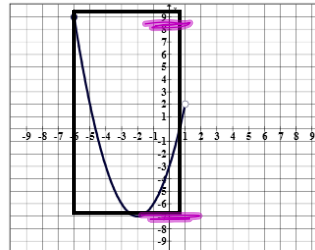
## pp 236-242

1.



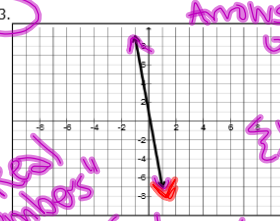
Domain	
Range	
	Continuous or Discrete

2.



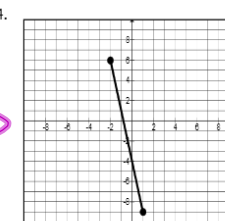
Domain	
Range	
	Continuous or Discrete

3.



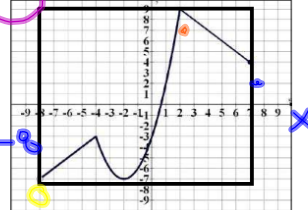
Domain	$\{x   -\infty < x < \infty\}$
Range	$\{y   -\infty < y < \infty\}$
Continuous or Discrete	

4.



Domain	
Range	
	Continuous or Discrete

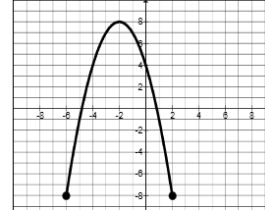
5.



Domain	$\{x \mid -8 < x \leq 4\}$
Range	$\{y \mid -3 < y \leq 1\}$

Continuous or Discrete

6.

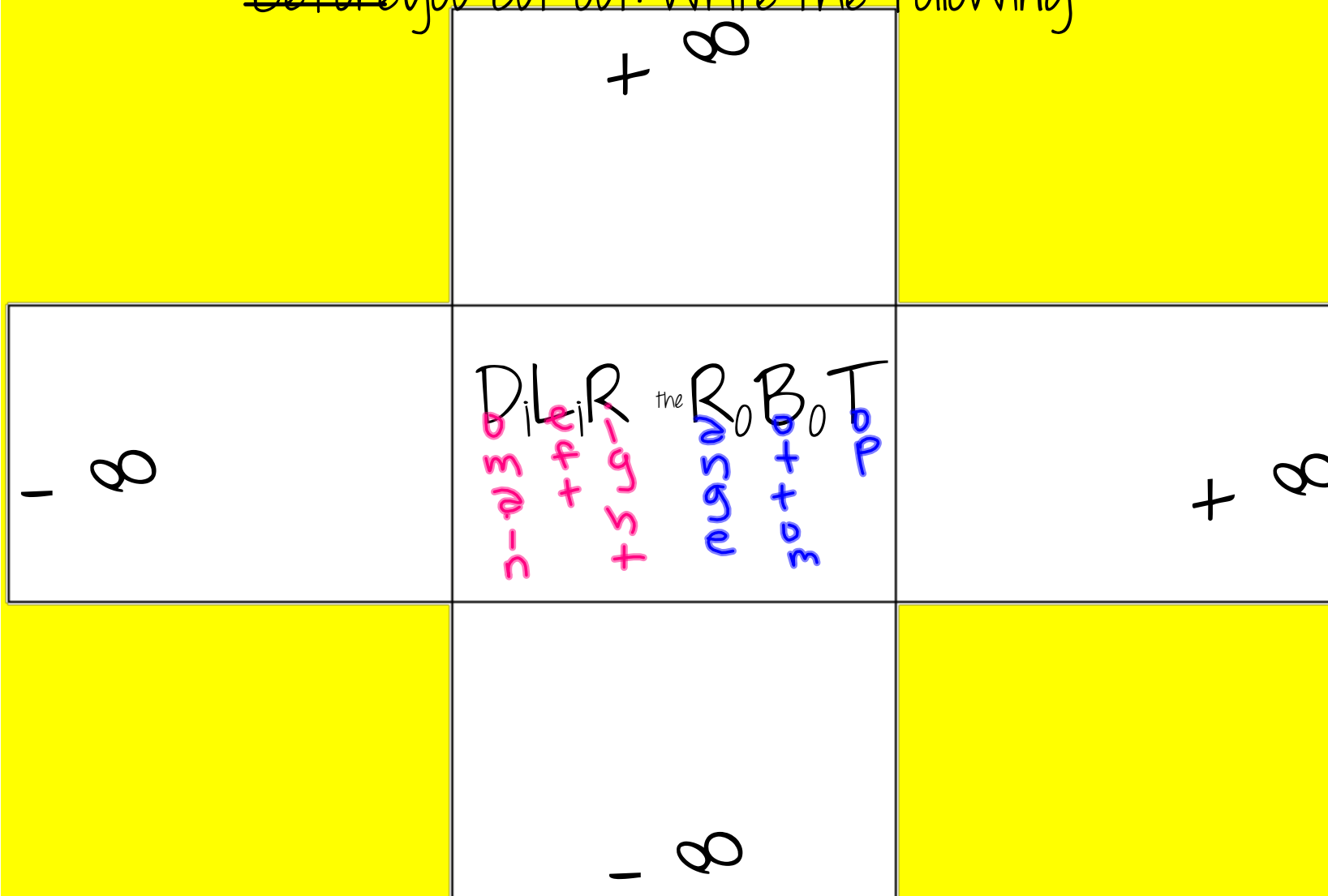


Domain	
Range	
	Continuous or Discrete

## Rundown for today

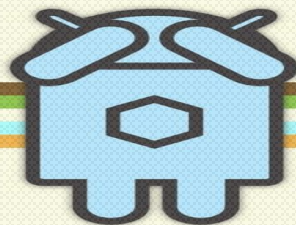
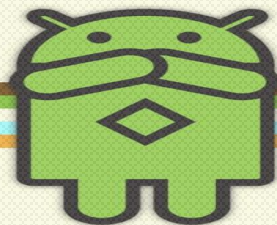
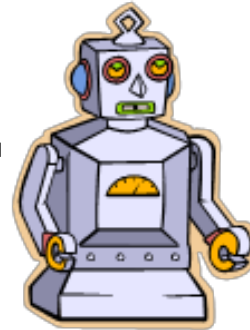
- Make storage pocket & foldable for page 27
- Cut out graphs to use with foldable
- Work 16 problems on answer document in your HW packet.
- Any questions not finished in class are homework.

Before you cut out: write the following





meet  
DiLiR the RoBoT



## Algebra I - Unit 2: Topic 2 – Domain &amp; Range of Graphs

**Practice - Domain & Range of Graphs Day 2****pp 236-242**

Using the cards and domain and range foldable, find the domain and range of all the graphs. State if the graph is continuous or discrete.

1. . Continuous or Discrete? Domain: Range:	2. . Continuous or Discrete? Domain: Range:
3. . Continuous or Discrete? Domain: Range:	4. . Continuous or Discrete? Domain: Range:
5. . Continuous or Discrete? Domain: Range:	6. . Continuous or Discrete? Domain: Range:
7. . Continuous or Discrete? Domain: Range:	8. . Continuous or Discrete? Domain: Range:
9. . Continuous or Discrete? Domain: Range:	10. . Continuous or Discrete? Domain: Range:
11. . Continuous or Discrete? Domain: Range:	12. . Continuous or Discrete? Domain: Range:
13. . Continuous or Discrete? Domain: Range:	14. . Continuous or Discrete? Domain: Range:
15. . Continuous or Discrete? Domain: Range:	16. . Continuous or Discrete? Domain: Range:

# exit ticket

on a sticky note, solve  
the following problem

BE SURE TO WRITE  
YOUR NAME

2. Which of the following equations can be used to find the measure of two complementary angles, where the measure of one angle is 7 less than twice the other?

A.  $3x - 7 = 90$

B.  $7 - x = 90$

C.  $2x - 7 = 90$

D.  $2x = 90$

